

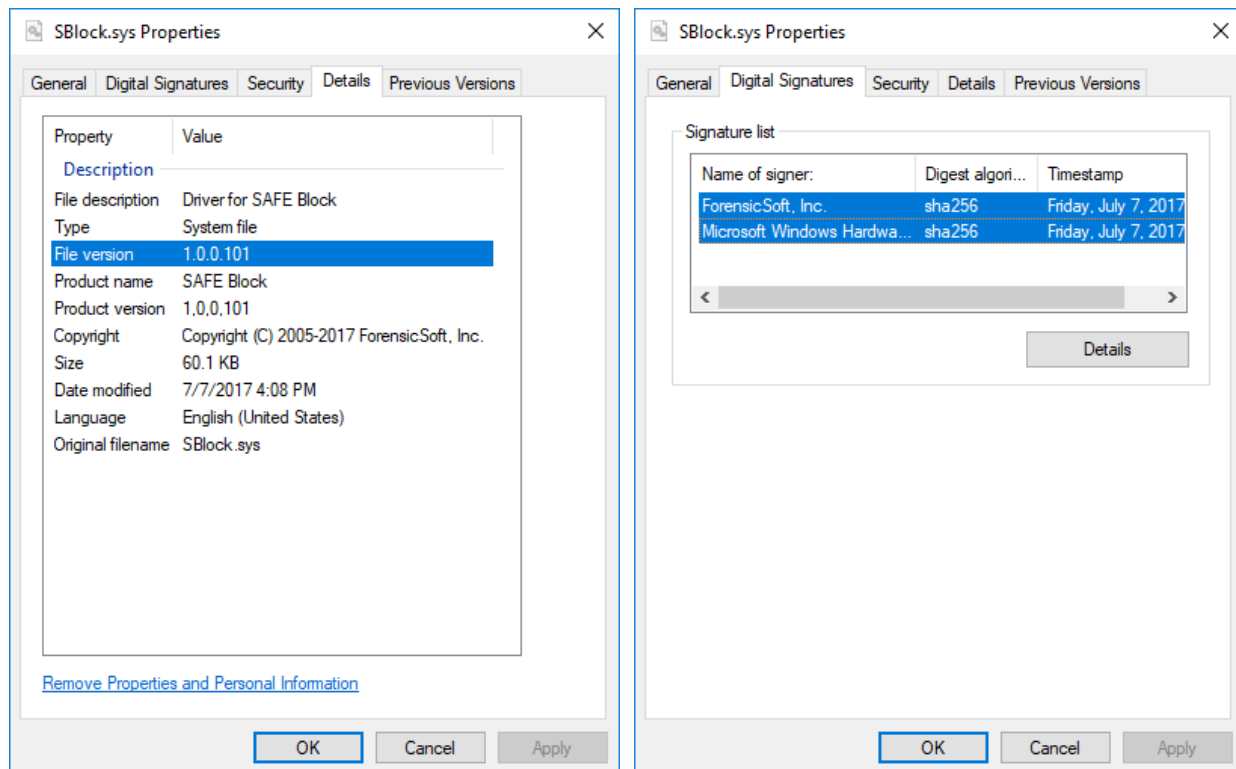
# SAFE Block Win8-10 (x64) Installation on Win 8.x and/or Windows Server 2012 R2 OS platforms

---

The SAFE Block Win8-10 driver, SBlock.sys, for our current release is signed with a ForensicSoft Inc. Extended Validation Symantec Code Signing certificate and Microsoft Windows Hardware Compatibility Publisher validation certificate compatible with the latest releases of the Windows 10 Operating System.

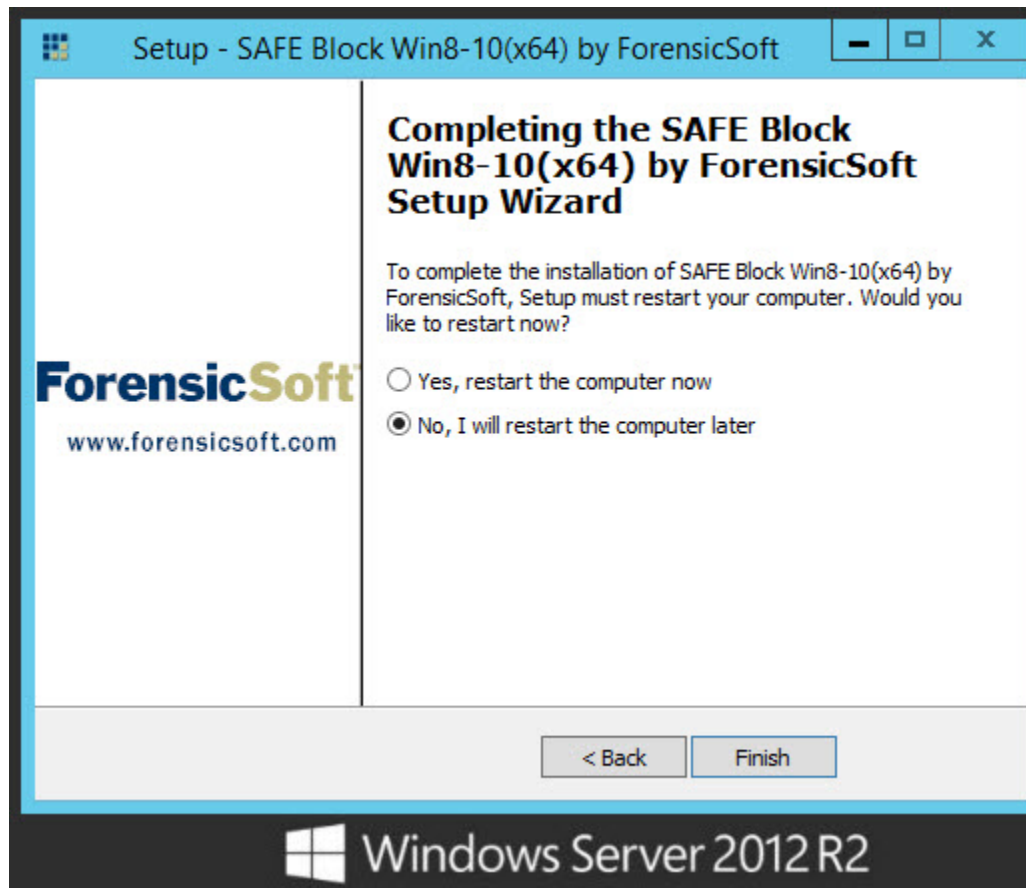
The Windows 8.x and Windows Server 2012R2 operating systems, as well as earlier releases of Windows 10, have different requirements for digitally signing kernel-mode drivers and therefore ForensicSoft Inc provides a backwards-compatible SBlock.sys driver for installation on any Windows 8.x or Windows Server 2012 R2 platforms, or early unpatched Windows 10 installations.

The appropriate driver, which are automatically installed with the SAFE Block Win8-10 installation programs, for the Windows 10 OS is labeled as file version 1.0.0.101 with the digital signatures shown below:



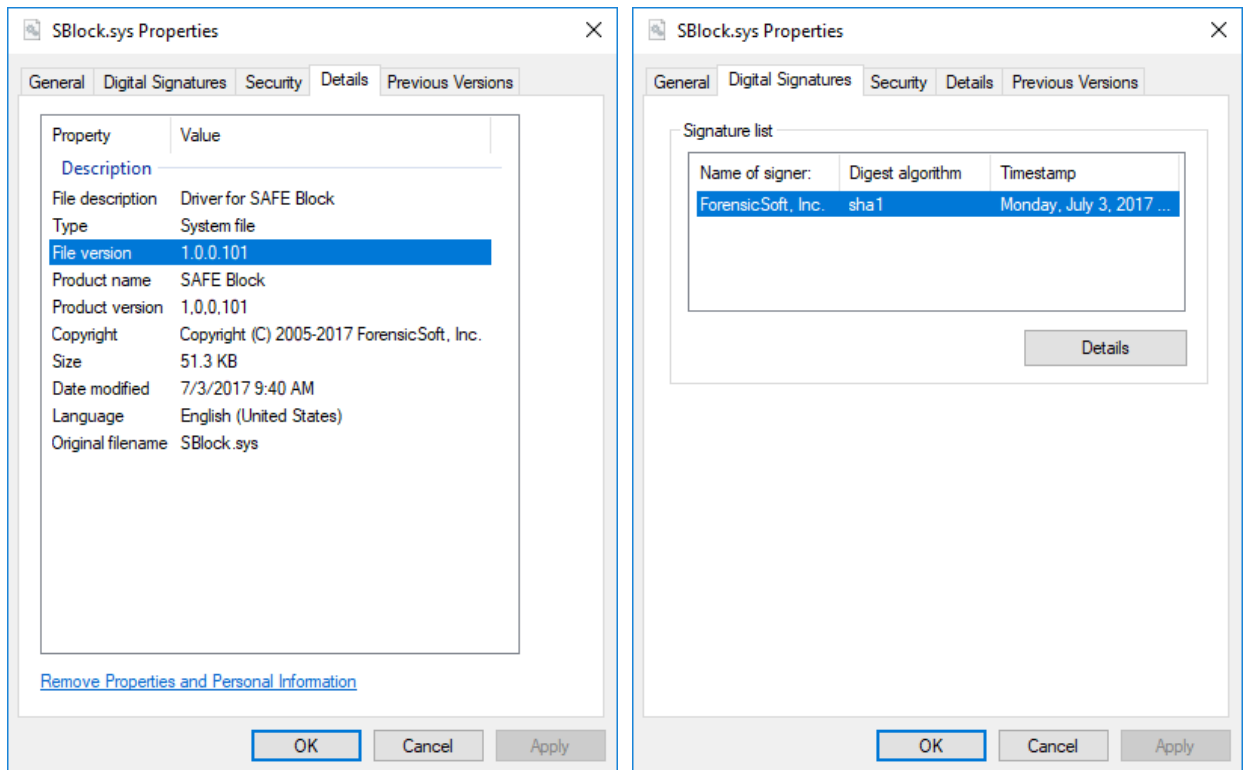
For installation on any Windows 8.x or Windows Server 2012 R2 operating systems, you must manually replace SBlock.sys driver installed automatically by the SAFE Block Win8-10 installation program with the SBlock.sys driver, version 101, provided in the zip file with this document.

This SBlock.sys manually driver replacement must be done at the end of the SAFE Block Win8-10 installation and prior to the required reboot at the end of the installation process. If you have Windows restart prior to the following driver replacement, your OS will not boot. Therefore, at the end of the SAFE Block Win8-10 installation, you MUST select “No, I will restart the computer later” and click “Finish” to close the installation program.



To replace the SBlock.sys driver prior to the required reboot, to complete the SAFE Block installation, you must browse to C:\Windows\System32\drivers in Windows Explorer and rename the existing SBlock.sys driver to SBlock.sys.old.

Once the driver has been renamed, copy the SBlock.sys driver provided in the zip file with this document into your C:\Windows\System32\drivers folder and reboot. The replacement driver to be used for Windows 8.x and Windows Server 2012 R2 is also labeled as file version 1.0.0.101 but is digitally signed with a single Symantec Class 3 SHA256 Code Signing certificate as shown below:



If any further assistance is required or you have any questions, email [support@forensicsoft.com](mailto:support@forensicsoft.com) for technical support.